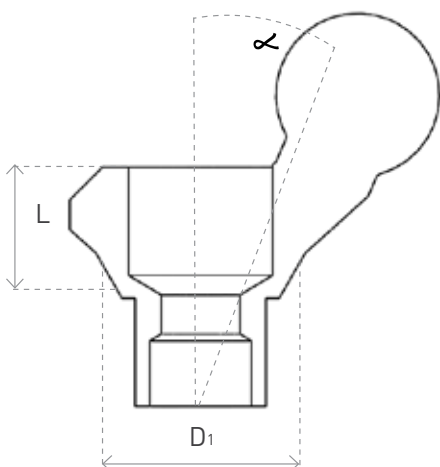


P5-20 ANGULAR BALL ATTACHMENT 20°



Provides multiple solutions for difficulties in affixing and removing over dentures, side pressures from other teeth/implants, prevents wear of ball attachment

Enables adjustment of the angle at which the implant is positioned

Narrow platform - 3mm diameter

Issued Patent by AB Dental

Excellent solution for non-parallel implants, even at extreme angles, for accurate joints on over denture implants

Multi-optional angular ball attachment, designed to connect a denture on tilted implants

P5-20 Angular Ball attachment 20°	P5a Metal cap	P5b Silicon cap	P5d Protective disk
P5-3, 20-1.5	P5a	P5b-1 (hard, grey color)	P5d
P5-3, 20-3		P5b-2 (medium, transparent color)	
P5-3, 20-4		P5b-3 (soft, pink color)	
P5-3, 20-5			
D1 (mm) = 4 ∠ 20° L (mm) = 1.5, 3, 4, 5	D1 (mm) = 5 L (mm) = 3.2	D1 (mm) = 4 L (mm) = 2.5	

P5-20 abutments Include a P5-20a screw and a silicon cap
 P5-20 attachment is also available as a set including metal and silicon caps

